



HIGHLY RELIABLE PICOSECOND FIBER LASER

Ultrafast Seedo™



Overview

The Enlight Ultrafast Seedo lasers with 10ps pulse width provides a cutting-edge and reliable light source for demanding applications of micro-machining, semiconductor inspection, optical metrology, multi-photon spectroscopy, and excellent seed source for optical amplifiers, and nonlinear wavelength conversion to longer or shorter wavelength.

Seedo lasers are deliberately designed to provide excellent performance and high reliability. With our unique fiber laser design, Seedo lasers can be power-scaled to 1 Watts-level.

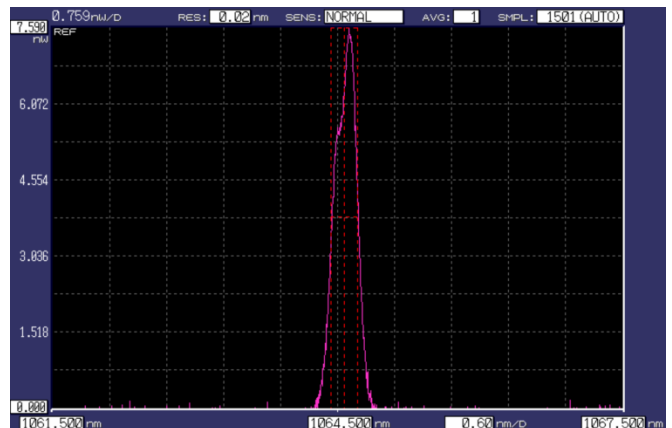
Incorporating Enlight's reliable and cutting-edge ultrafast fiber laser along with precise and advanced optical packaging design, Seedo lasers are characterized by stable power and long lifetime. They are built for 24/7 industrial applications for lowest ownership cost and highest uptime.

Features

- High Peak power, high pulse energy and ultrafast pulse (2-50 ps)
- Self-starting mode-locking and optimized design for rugged, reliable picosecond laser with low amplitude noise
- Long lifetime ensures lowest cost of ownership and high uptime
- High efficiency with stable power and most compact ultrafast fiber laser with linearly polarized output
- Spectrally transform-limited pulse widths without CW light content
- Advanced and precise controlling design
- Excellent beam quality ($M^2 < 1.1$) and reliability

Applications

- Biomedical and Chemistry
- Micro-Machining (thin-film and transparent materials processing)
- Optical metrology
- Seed laser source





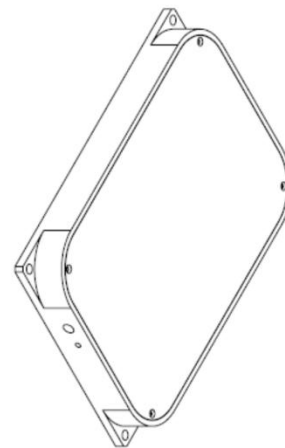
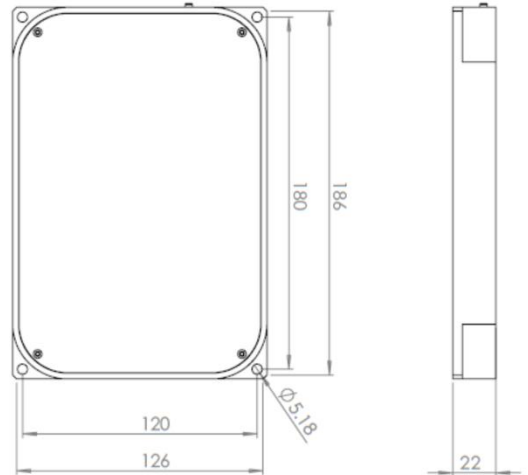
HIGH ENERGY RELIABLE PICOSECOND LASER

Ultrafast Pica^{PLUS}™

Specifications

Characteristics	Seedo-5	Seedo-10
Wavelength	1030nm/1064nm	
Repetition Rate	30 MHz	30MHz
Output Power	>2mW	>10mW
Pulse Width	Typical 6ps and 10ps (2-50p on request)	
Spatial Mode	TEM ₀₀	
M ²	<1.1	
Polarization	Linear	Linear
PER	>18dB	>18dB
Beam Roundness	>90%	
Warm-up Time (from cold start)	<30 min	
Operating Temp. Range	18 to 35°C	
Operating Humidity	5-80%, non-condensing	
Non-operating Temp. Range	0-50°C	
Non-operating Humidity	8-95%, non-condensing	

Laser Head Dimensions



Dimensions are in mm

Enlight Tech

3455 NW John Olsen Pl.
Hillsboro, OR 97124